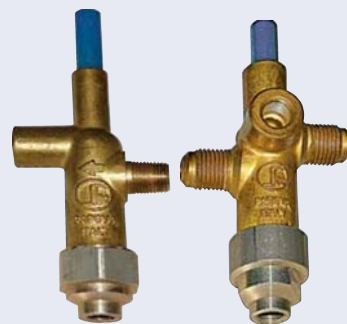


400 M1 - 420 B3

MAIN FEATURES

Thermoelectric flame supervision devices with push button with pilot outlet (B3 series) or without (M1 series), available in a wide range of gas connections.

Versions for high working temperature or pressure are available.



TECHNICAL DATA

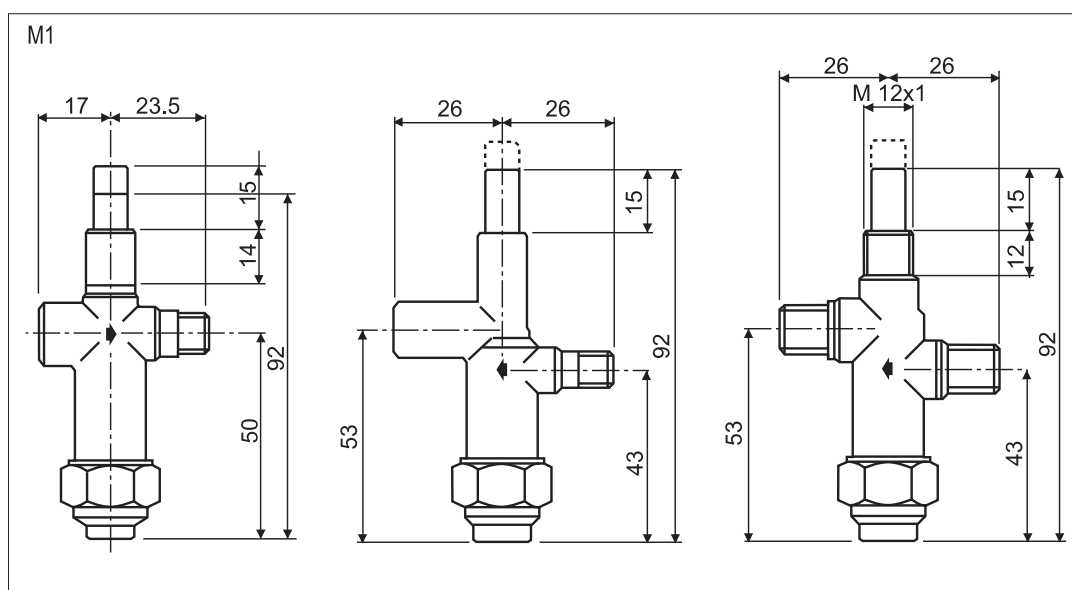
- | | |
|------------------------------------|-------------------------------------|
| • Ambient temperature | 0 to + 80 C° |
| • Inlet and outlet gas connections | Rp 1/4 ISO 7 |
| | or Rp 1/8 ISO 7 |
| | or Rp 3/8 ISO 7 |
| • Maximum gas inlet pressure | M1 series 150 mbar |
| | B3 series 50 mbar |
| • Assembly position | Any position |
| • Gas families | 2 nd and 3 rd |

CODES 400 M1

Codes	Inlet	Outlet	Thread under push botton	Push botton Color	Push botton Length	Magnet unit	Tc nut	Mark on magnet unit nut
0400006	Male thread - G1/4" for 8 mm i.d. olive	Male thread - G1/4" for 8 mm i.d. olive	Yes (M12x1)	Blue	Short (15 mm)	0006099 (High temp. 150°C norm. Press. 50 mbar)	M8x1	HT
0400007	Male thread - G3/8" for 10 mm i.d. olive	Male thread - G3/8" for 10 mm i.d. olive	Yes (M12x1)	Blue	Short (15 mm)	0006099 (High temp. 150°C norm. Press. 50 mbar)	M8x1	HT
0400031	Female thread - Rp1/8"	Male thread - R1/8"	Yes (M12x1)	Blue	Short (15 mm)	0006002 (norm. Temp. 80°C High press. 5 bar)	M8x1	HP
0400054	Female thread - Rp1/4"	Female thread - Rc1/4"	Yes (M12x1)	Blue	Short (15 mm)	0006002 (norm. Temp. 80°C High press. 5 bar)	M8x1	HP
0400057	male thread - G1/4" for 1/4" i.d. olive	Male thread - G1/4" for 1/4" i.d. olive	Yes (M12x1)	Blue	Short (15 mm)	0006002 (norm. Temp. 80°C High press. 5 bar)	M8x1	HP
0400059	Male thread - R1/8"	Female thread - M10x1	No	Blue	Short (15 mm)	0006002 (norm. Temp. 80°C High press. 5 bar)	M8x1	HP
0400061	male thread - G1/4" for 1/4" i.d. olive	Male thread - G1/4" for 1/4" i.d. olive	Yes (M12x1)	Blue	Short (15 mm)	2016102 (norm. Temp. 80°C norm. Press. 50 mbar)	M8x1	NT
0400072	Male thread - 1/8" NPT	Female thread - 1/8" NPT	No	Blue	Long (19 mm)	0006099 (High temp. 150°C norm. Press. 50 mbar)	M8x1	HT
0400074	Male thread - R1/8"	Female thread - Rc1/8"	Yes (M12x1)	Blue	Short (15 mm)	0006002 (norm. Temp. 80°C High press. 5 bar)	M8x1	HP
0400085	Male thread - R1/8"	Female thread - G1/8" for 6 mm i.d. olive	No	Blue	Short (15 mm)	0006099 (High temp. 150°C norm. Press. 50 mbar)	M8x1	HT
0400087	Male thread - G1/4" for 8 mm i.d. olive	Male thread - G1/4" for 8 mm i.d. olive	Yes (M12x1)	Blue	Short (15 mm)	0006002 (norm. Temp. 80°C High press. 5 bar)	M8x1	HP
0400088	Female thread - Rp1/8"	Male thread - R1/8" and inside M6x0.75	Yes (M12x1)	Blue	Short (15 mm)	0006099 (High temp. 150°C norm. Press. 50 mbar)	M8x1	HT



Codes	Inlet	Outlet	Thread under push bottom	Push bottom Color	Push bottom Length	Magnet unit	Tc nut	Mark on magnet unit nut
0400091	male thread - G1/4" for 1/4" i.d. olive	Male thread - G1/4" for 1/4" i.d. olive	Yes (M12x1)	Blue	Short (15 mm)	0006002 (norm. Temp. 80°C High press. 5 bar)	11/32 ASA	HP
0400096	Male thread - G1/4" Bundy	Male thread - G1/4" Bundy	Yes (M12x1)	Blue	Short (15 mm)	0006002 (norm. Temp. 80°C High press. 5 bar)	M8x1	HP
0400097	Male thread - G3/8" for Bundy	Male thread - G3/8" Bundy	Yes (M12x1)	Red	Short (15 mm)	0006002 (norm. Temp. 80°C High press. 5 bar)	M8x1	HP
0400099	Male thread - 1/8" NPT	Male thread - 1/8" Npt and inside 1/4 - 32	No	Blue	Short (15 mm)	0006002 (norm. Temp. 80°C High press. 5 bar)	M8x1	20 PSI
0400100	Male thread - 1/8" NPT	Male thread - 1/8" Npt and inside 1/4 - 32	No	Blue	Long (19 mm)	0006002 (norm. Temp. 80°C High press. 5 bar)	M8x1	20 PSI



CODES 420 B3

Codes	Inlet	Outlet	Thread under push button	Tc connection	Pilot fitting	Note
0420003	Male thread - G 1/4" Bundy	Male thread - G 1/4" Bundy	No	M9x1	M10x1 thread f 6 mm shear-off nut and olive	Max working pressure = 3bar
0420025	Male thread - G 3/8" Bundy	Male thread - G 3/8" Bundy	Yes (M14x1)	M9x1	M10x1 thread f 6 mm shear-off nut and olive	
0420038	Male thread - 3/8"	Female thread - Rp 1/4"	No	M9x1	M10x1 thread f 6 mm shear-off nut and olive	
0420040	Male thread - G 3/8" for 10mm i.d. olive	Male thread - G 3/8" for 10 mm i.d. olive	No	M9x1	No	
0420048	Female thread - Rp 1/4	Female thread - Rp 1/4"	No	M9x1	M10x1 thread f 1/4" mm shear-off nut and olive	
0420051	Male thread - G 3/8" Bundy	Male thread - G 3/8" Bundy	Yes (M14x1)	M9x1	No	

